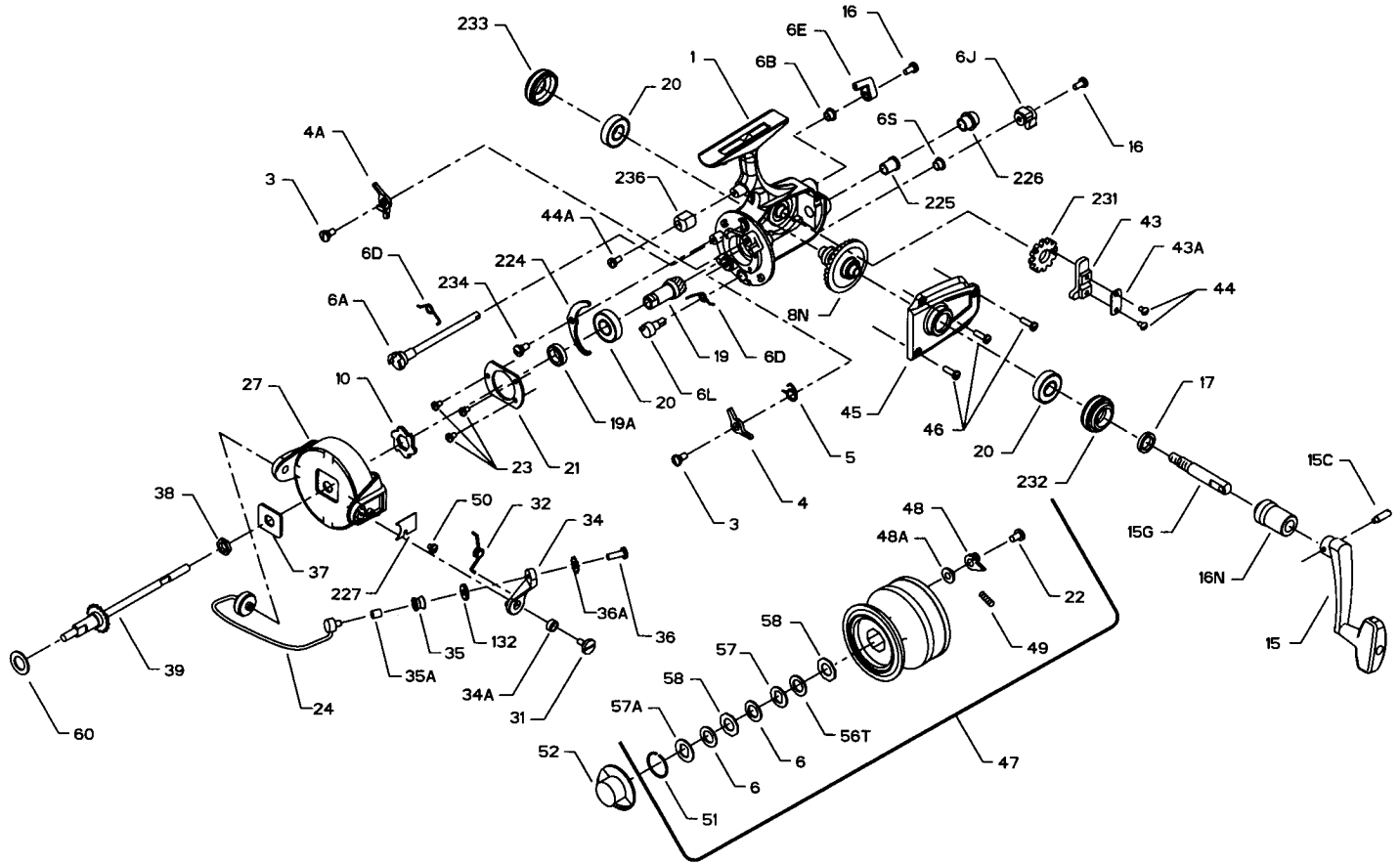




PARTS LIST FOR MODEL 7500SS AND 8500SS



KEY NO.	DESCRIPTION
1	Housing
3	Dog Screw (2 req.)
4	Dog
4A	Silent Dog
5	Click Dog Spring
6	Drag Washer-HT-100 (2 req.)
6A	Upper Eccentric
6B	Upper Eccentric Liner
6D	Eccentric Spring
6E	Anti-Reverse Lever
6J	Silent Dog Lever
6L	Silent Eccentric
6S	Silent Eccentric Liner
8N	Main Gear
10	Ratchet
15	Handle
15C	Handle Pivot Screw
15G	Handle Pivot
16	Eccentric Screw (2 req.)
16N	Handle Collar
17	Seal Washer
19	Pinion
19A	Pinion Spacer
20	Ball Bearing (3 req.)
21	Bearing Cover
22	Spool Click Screw
23	Bearing Cover Screw (3 req.)
24	Bail Wire
27	Rotor
31	Bail Arm Screw
32	Bail Arm Spring
34	Bail Arm
34A	Bail Arm Bushing

PART NO.	DESCRIPTION
1-7500	Housing
1-8500	Housing
3-750	Dog Screw (2 req.)
4-750	Dog
4A-750	Silent Dog
5-704	Click Dog Spring
6-60	Drag Washer-HT-100 (2 req.)
6A-750	Upper Eccentric
6B-750	Upper Eccentric Liner
6D-710	Eccentric Spring
6E-750	Anti-Reverse Lever
6J-750	Silent Dog Lever
6L-750	Silent Eccentric
6B-700Z	Silent Eccentric Liner
8N-7500	Main Gear
10-750	Ratchet
15-750	Handle
15C-750	Handle Pivot Screw
15G-850	Handle Pivot
16-910	Eccentric Screw (2 req.)
16N-850	Handle Collar
17-750	Seal Washer
19-750	Pinion
19A-750	Pinion Spacer
20-704	Ball Bearing (3 req.)
21-750	Bearing Cover
22-750	Spool Click Screw
23-750	Bearing Cover Screw (3 req.)
24-750	Bail Wire
24-850	Bail Wire
27-750	Rotor
27-850	Rotor
31-750	Bail Arm Screw
32-750	Bail Arm Spring
34-750	Bail Arm
34A-750	Bail Arm Bushing

KEY NO.	DESCRIPTION	PART NO.
35	Line Roller	35-750
35A	Line Roller Bushing	35A-704
36	Bail Stud Screw	36-750
36A	Lock Washer	36A-750
37	Rotor Washer	37-706
38	Rotor Nut	38-710
39	Spool Shaft	39-750
43	Crosswind Block	43-750
43A	Crosswind Block Plate	43A-750
44	Crosswind Block Screw (2 req.)	44-750
44A	Trip Bumper Screw	44-750
45	Housing Cover	45-7500
46	Housing Cover Screw (3 req.)	46-750
47	Spool (Complete)	47-7500
48	Click Tongue	48-750
48A	Click Tongue Washer	48A-750
49	Click Tongue Spring	49-710
50	Bail Spring Cover Screw	50-712
51	Retaining Ring	51-704
52	Drag Knob	52-750
56T	Drag Washer (Teflon®)	56T-704
57	Metal Keyed	57-704
57A	Drag Washer Keyed	57A-750
58	Metal Keyed (Octagon) (2 req.)	58-704
60	Thrust Washer	60-750
132	Roller Washer	132-750
224	Transfer Lever	224-750
225	Crosswind Shaft Bushing	225-750
226	Bushing Cap Cover	226-7500
227	Bail Spring Cover	227-750
231	Crosswind Gear	231-750
232	Bearing Cover (Open)	232-750
233	Bearing Cover (Closed)	233-750
234	Transfer Lever Screw	234-750
236	Trip Bumper	236-750