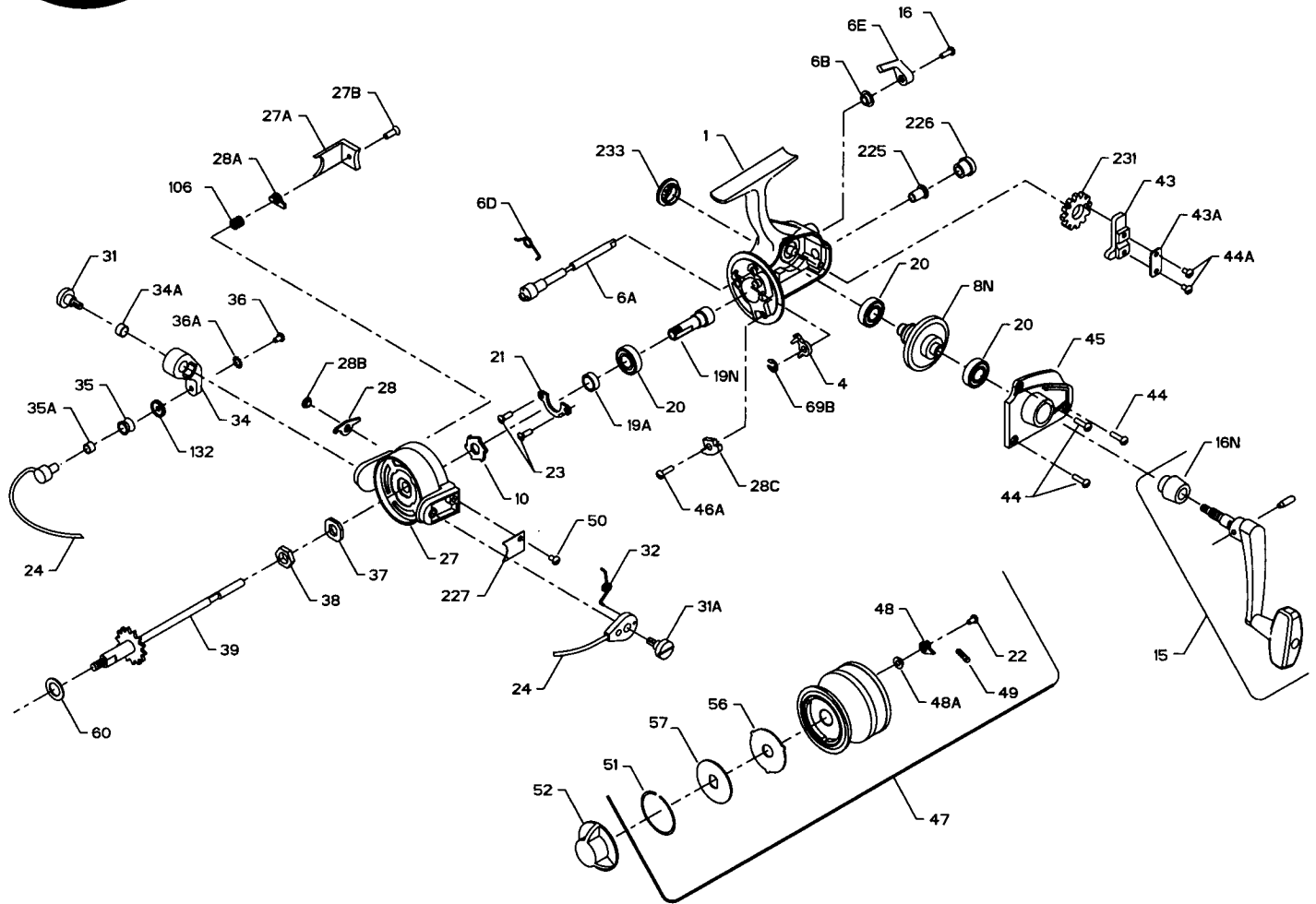




PARTS LIST FOR MODEL 4400SS



KEY NO.	DESCRIPTION	PART NO.	KEY NO.	DESCRIPTION	PART NO.
1	Housing	1-4400	35A	Line Roller Bushing	35A-704
4	Dog	4-450	36	Bail Stud Screw	36-750
6A	Eccentric	6A-440	36A	Lock Washer	36A-750
6B	Eccentric Liner	6B-750	37	Rotor Washer	37-450
6D	Eccentric Spring	6D-710	38	Rotor Nut	38-550
6E	Eccentric Lever	6E-750	39	Spool Shaft	39-440
8N	Main Gear	8N-4400	43	Crosswind Block	43-440
10	Ratchet	10-440	43A	Crosswind Block Plate	43A-440
15	Handle (Complete)	15-4400	44	Housing Cover Screw (3 req.)	44-704
16	Eccentric Screw	16-910	44A	Crosswind Block Screw (2 req.)	44-4400
16N	Handle Collar	16-4400	45	Housing Cover	45-4400
19A	Pinion Spacer	19A-550	46A	Trip Cam Screw	46A-704
19N	Pinion	19N-4400	47	Spool (Complete)	47-4400
20	Ball Bearing (3 req.)	20-722	48	Click Tongue	48-450
21	Bearing Cover	21-450	48A	Click Tongue Washer	48A-750
22	Spool Click Screw	22-750	49	Click Tongue Spring	49-710
23	Bearing Cover Screw (2 req.)	23-750	50	Bail Spring Cover Screw	50-712
24	Bail Wire	24-440	51	Retaining Ring	51-440
27	Rotor	27-4400	52	Drag Knob	52-440
27A	Bail Trip Cover	27A-440	56	Drag Washer	56-440
27B	Rotor End Screw	27B-420	57	Metal Keyed Washer	57-440
28	Trip Lever	28-440	60	Thrust Washer (Teflon®)	60-450
28A	Cam Lever	28A-440	69B	Dog Retaining Ring	69B-4400
28B	Trip Lever Bushing	28B-440	106	Lever Spring	106-5500
28C	Trip Cam	28C-440	132	Roller Washer	132-450
31	Bail Arm Screw	31-550	132	Roller Washer	132-450
31A	Bail Cam Screw	31A-450	225	Crosswind Shaft Bushing	225-440
32	Bail Spring	32-440	226	Bushing Cap Cover	226-450
34	Bail Arm	34-450	227	Bail Spring Cover	227-440
34A	Bail Arm Bushing	34A-550	231	Crosswind Gear	231-440
35	Line Roller	35-704	233	Bearing Cover	233-440