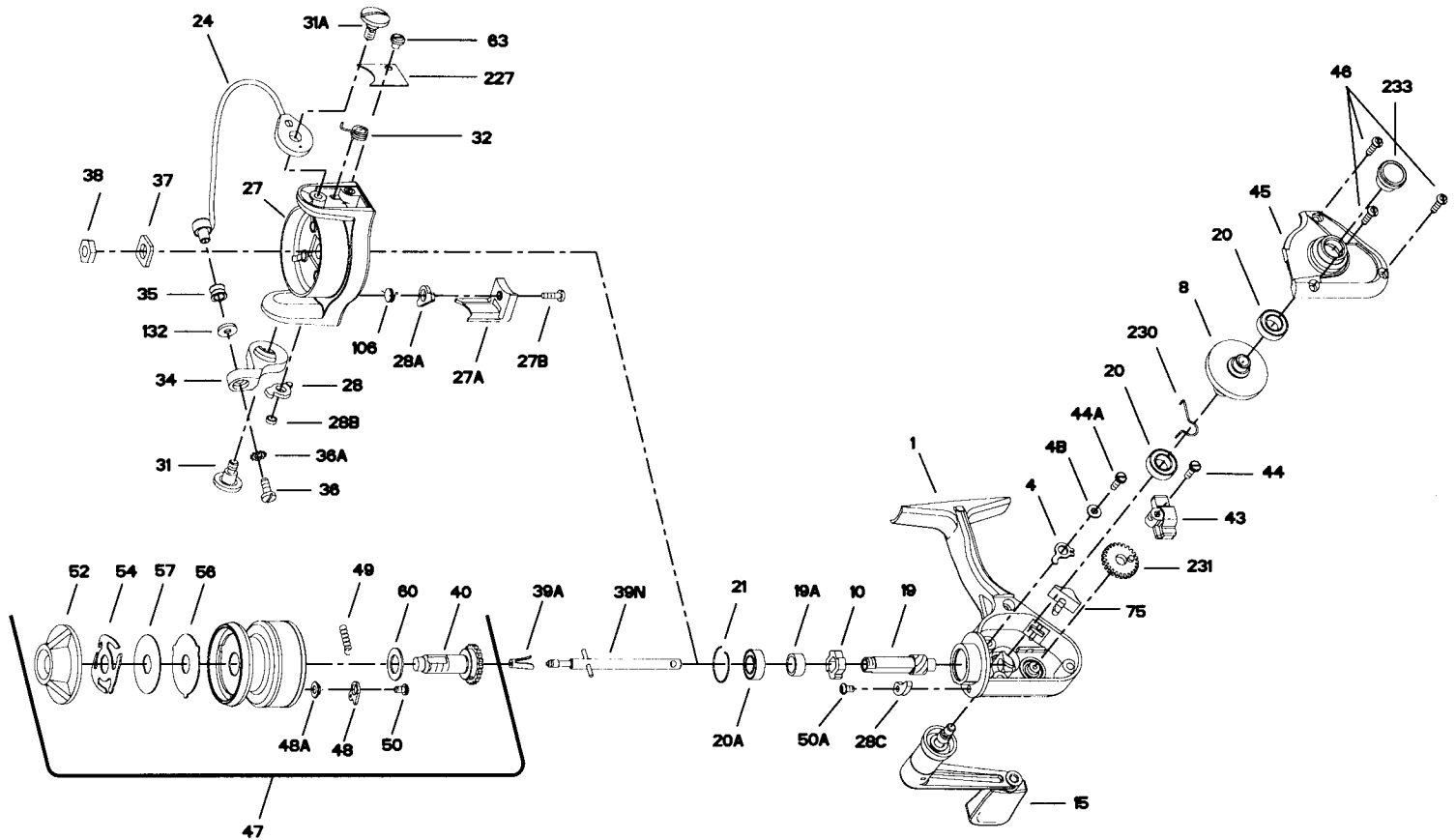




## PARTS LIST FOR MODEL 4200SS



KEY NO.	DESCRIPTION	PART NO.	KEY NO.	DESCRIPTION	PART NO.
1	Housing	1-4200	38	Rotor Cup Nut	38-720
4	Dog	4-4200	39A	Spool Retainer	39A-4300
4B	Dog Lever Bushing	4B-4200	39N	Spool Shaft	39N-4200
8	Main Gear Assembly	8-4200	40	Spool Sleeve Complete	40-4200
10	Ratchet	10-4200	43	Crosswind Block	43-4200
15	Handle Complete	15-4200	44	Crosswind Block Screw	44-4200
19	Pinion	19-4200	44A	Dog Screw	46A-4300
19A	Pinion Spacer	19A-4200	45	Housing Cover	45-4200
20	Ball Bearing-Main Gear (2 req.)	20-4200	46	Housing Cover Screw (3 req.)	46-4300
20A	Ball Bearing-Pinion	55-4200	47	Spool (Complete)	47-4200
21	Bearing Lock Ring	21-4200	48	Click Tongue	48N-4300
24	Bail Wire Assembly	24-420	48A	Click Tongue Washer	48A-4300
27	Rotor Cup	27-4200	49	Click Spring	49-4300
27A	Bail Trip Cover	27A-4200	50	Click Spring Screw	63A-2.5FR
27B	Bail Trip Cover Screw	27B-420	50A	Trip Cam Screw	46A-4300
28	Trip Lever	28-420	52	Drag Knob	52-716Z
28A	Cam Lever	28A-440	54	Drag Spring	54-4200
28B	Trip Lever Bushing	28B-4200	56	Drag Washer HT-100	56-4200
28C	Trip Cam	28C-4200	57	Drag Washer-Metal	57-4200
31	Bail Arm Screw	31-420	60	Spool Sleeve Washer	60-716
31A	Bail Cam Screw	31A-420	63	Bail Spring Cover Screw	63-500S
32	Bail Spring	32-420	75	Eccentric Button	75-4300
34	Bail Arm	34-420	106	Cam Lever Spring	106-5500
35	Line Roller	35-420	132	Roller Washer	132-420
36	Bail Stud Screw	36-420	227	Bail Spring Cover	227-4300
36A	Lock Washer	36A-750	230	Friction Dog Spring	230-4200
37	Rotor Cup Washer	37-420	231	Crosswind Gear	231-4200
			233	Bearing Cover	233-4200