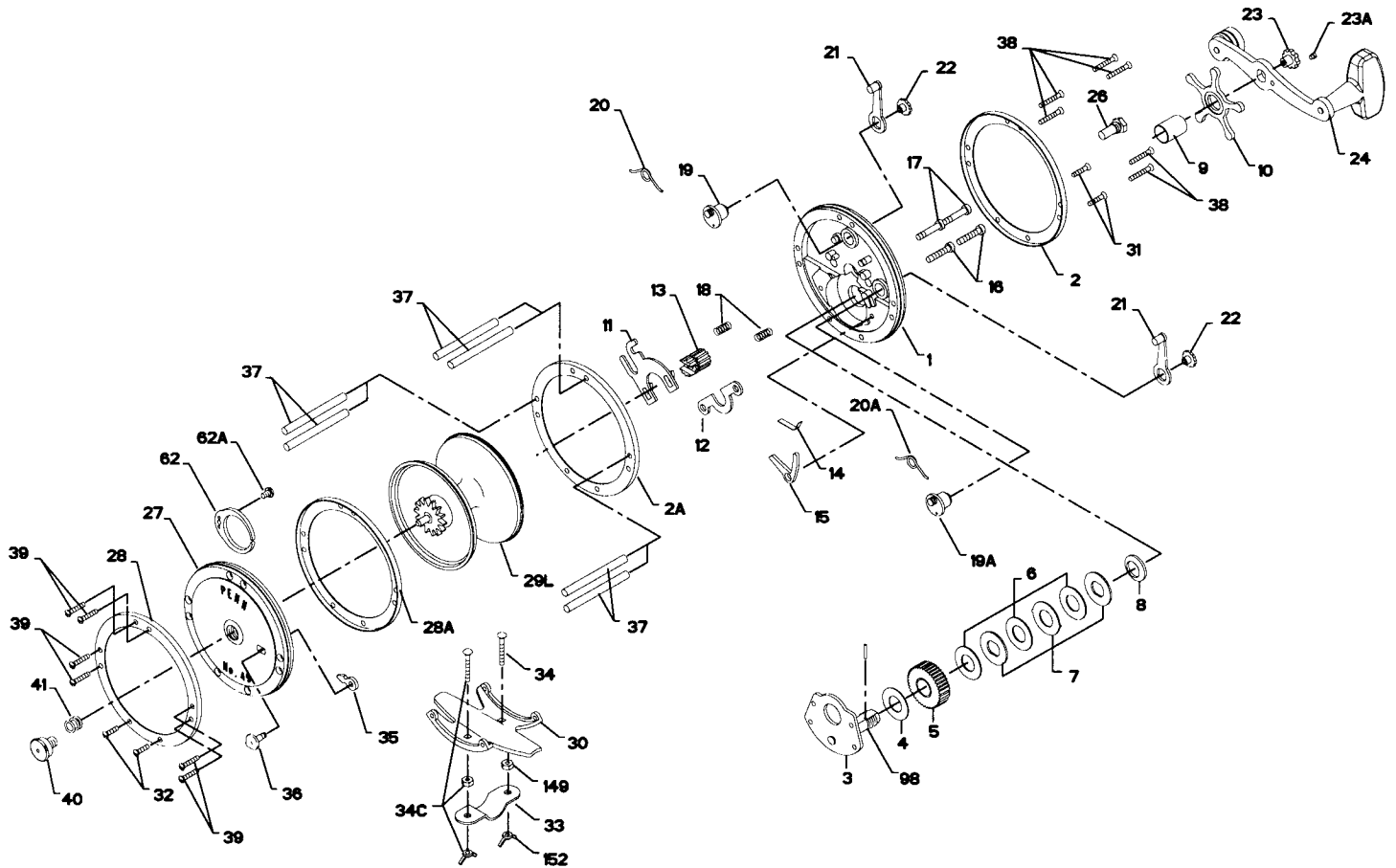




PARTS LIST FOR MODEL 49L AND 149L



KEY NO.	DESCRIPTION	PART NO.	KEY NO.	DESCRIPTION	PART NO.
1	Right Side Plate	1-49	22	Eccentric Screw (2 req.)	22-60
2	Outer Ring	1-149	23	Handle Screw	23-60
2A	Inner Ring (49 & 149)	2-49-O	23A	Handle Lock Screw	110-60
3	Bridge w/Sleeve	2-49-I	24	Handle	24-49
4	Fiber Washer	3-49	26	Right Side Bearing	26-60
5	Main Gear	3-149	27	Left Side Plate	27-49
6	Drag Washer (3 req.) (49)	4-60	28	Outer Left Side Ring	28-49-O
7	Drag Washer (3 req.) (149)	5-49	28A	Inner Left Side Ring (49 & 149)	2-49-I
8	Metal Washer Set (49 & 149)	5-149	29L	Spool	29L-49
9	Metal Washer Set (149)	6-49	30	Stand	30-49
10	Tension Spring	6-60	30	Stand	30-149.
11	Spacing Sleeve	7C-49	31	R.S. Stand Screw (49)	39-3
12	Star Drag Wheel	7C-60	32	R.S. Stand Screw (149)	38-8
13	Eccentric Jack	8-60	32	L.S. Stand Screw	39-3
14	Pinion Yoke	9-60	33	L.S. Stand Screw	38-8
15	Pinion Yoke (149)	10-49	33	Rod Clamp	33-49
16	Pinion	11-49	33	Ringed Rod Clamp (49 Only) (Optional)	*33R-49
17	Pinion (149)	12-60	34	Rod Clamp Screw (2 req.)	34-49
18	Dog Spring	12-113	34C	Rod Clamp Screw w/Nuts	34C-49
19	Dog (49)	13-49	37	Post	37-49
20	Dog (149)	13-113	38	L.S. Post Screw (49) (6 req.)	39-9
20A	Eccentric Spring	14-60	39	L.S. Post Screw (149) (6 req.)	39-6
21	Eccentric Lever (1 req.)	15-49	39	R.S. Post Screw (49) (6 req.)	39-9
		15-149	39	R.S. Post Screw (149) (6 req.)	39-6
		16-60	40	Complete Left Side Bearing	40-60
		17-60	41	Left Side Bearing Spring	41-60
		18-60	62	Click Spring	62M-309
		19-60	62A	Click Spring Screw	31-2.5FR
		19-49	98	Gear Sleeve	98-60
		20-60	149	Hex Nut	149-200
		20-155	152	Wing Nut	152-200
		21-49			