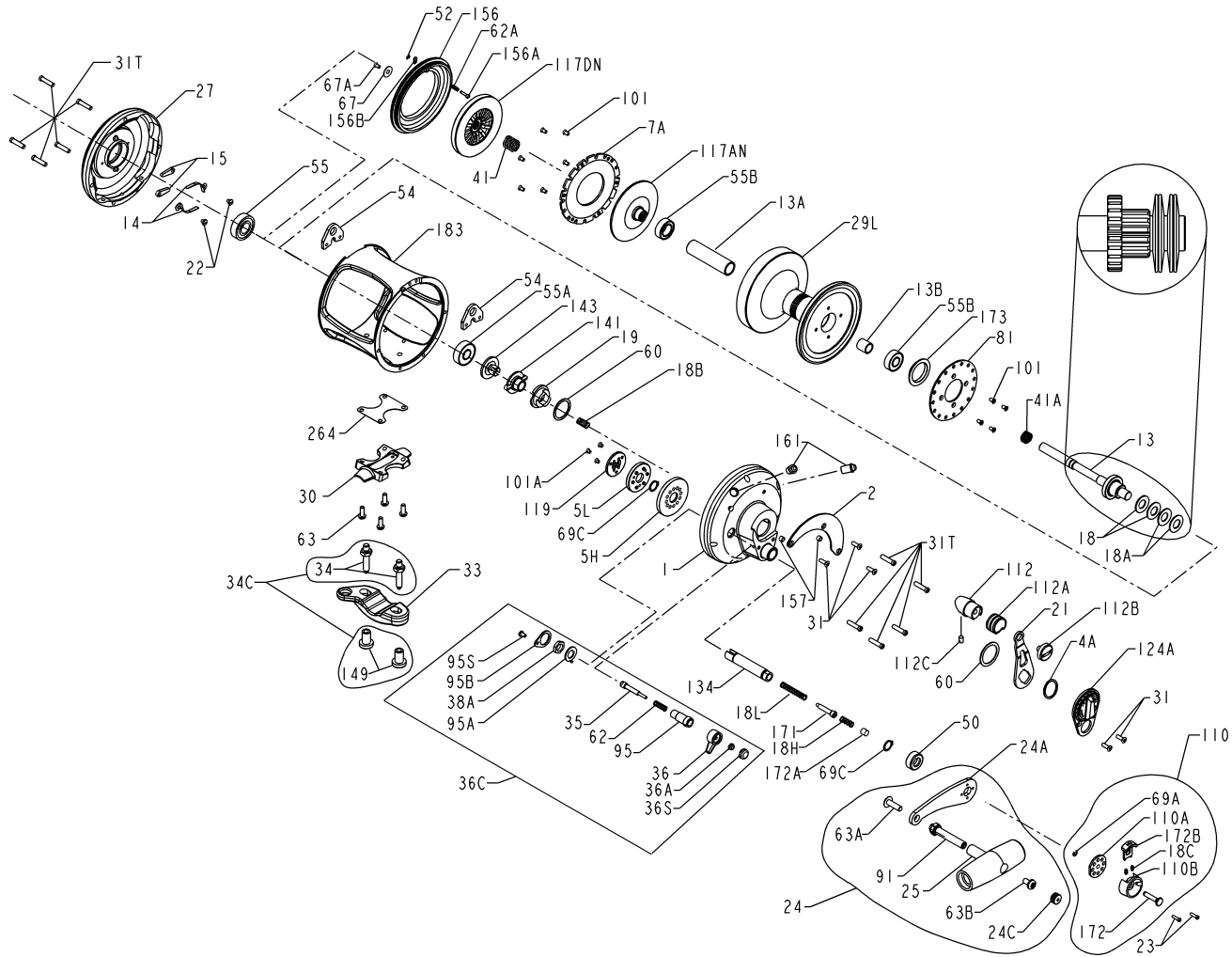




PARTS LIST FOR MODEL 50VSW For Serial No's A060950 and BEFORE



| KEY NO. | DESCRIPTION | PART NO. |
|----------------|-----------------------------|-----------------|
| 1 | Right Side Plate Assembly | 001 050VS |
| 2 | Quadrant Ring | 002 050VS |
| 4A | Teflon Thrust Washer | 004 012LT |
| 5H | Main Gear (High Speed) | 005 050VS-HS |
| 5L | Main Gear (Low Speed) | 005 050VS-LS |
| 7A | Metal Drag Washer | 007A050VS |
| 13 | Pinion Gear | 013 050VSW |
| 13A | Spool Sleeve | 013B050VSW |
| 13B | Pinion Gear Sleeve | 013B070 |
| 14 | Dog Spring (2 req.) | 014 050 |
| 15 | Dog (2 req.) | 015 050 |
| 18 | Disc Clutch Spring (2 req.) | 018 050TW |
| 18A | Disc Clutch Springs (2req.) | 018 050W |

| KEY NO. | DESCRIPTION | PART NO. |
|----------------|----------------------------|-----------------|
| 18B | Spring | 018 349 |
| 18C | Shift Button Spring (2) | 018C015KG |
| 18H | Shift Spring (Heavy) | 018H015KG |
| 18L | Shift Spring (Light) | 018L015KG |
| 19 | Eccentric Cam | 019 050VS |
| 21 | Eccentric Lever | 021 050VS |
| 22 | Dog Spring Screw (2) req.) | 022 109 |
| 23 | Screw, Handle (2 req.) | 023 015KG |
| 24 | Handle Complete | 024N030S |
| 24A | Handle Blank | 024N030S-1 |
| 24C | Handle Knob Cap | 024C050 |
| 25 | Knob Assembly | 025 050 |
| 27 | Left Side Plate-Assembly | 027 050VS |
| 29 | Spool | 029L050VSW |
| 30 | Stand | 030 050T |

| KEY NO. | DESCRIPTION | PART NO. |
|----------------|--------------------------------|-----------------|
| 31 | Short Screw (5 req.) | 031T070 |
| 31T | Side Plate Screw (10 req.) | 031T080 |
| 33 | Rod Clamp | 033 070 |
| 34 | Clamp Screw (2 req.) | 034 070 |
| 34C | Rod Clamp Screw w/Nut (2 req.) | 034C070 |
| 35 | Click Tongue | 035 070VS |
| 36 | Click Button | 036N050 |
| 36A | Click Button Nut | 036 700 |
| 36C | Clicker Assembly | 036C050VSW |
| 36S | Click Button Cap | 036S080ST |
| 38A | Click Bushing Nut | 038 710 |
| 41 | Bearing Spring | 041 050 |
| 41A | Drag Spring | 041 070 |
| 50 | Shield | 050N030S |
| 52 | Retaining Ring | 052 910 |
| 54 | Harness Lug (2 req.) | 054 050T |
| 55 | Ball Bearing | 055 080 |
| 55A | Ball Bearing | 055 050 |
| 55B | Ball Bearing (2 req.) | 055 080ST |
| 60 | Thrust Washer (2 req.) | 060 050 |
| 62 | Click Spring | 062 050 |
| 62A | Click Spring | 062 545 |
| 63 | Stand Screw (4 req.) | 063 030T |
| 63A | Screw | 063A050 |
| 63B | Screw | 063 050 |
| 67 | Pinion Gear Washer | 067 070 |
| 67A | Retaining Screw | 067A070 |
| 69A | Retaining Ring | 069B030S |
| 69C | Retaining Ring (2 req.) | 195 040 |
| 81 | Ratchet | 081 050 |
| 91 | Handle Rivet | 091N050 |
| 95 | Click Tongue Bushing | 095 070 |
| 95A | Click Bushing Washer | 095A050 |
| 95B | Retaining Plate | 095B070 |
| 95S | Retaining Plate Screw | 046A704 |
| 101 | Ratchet Screw (10 req.) | 101 030 |
| 101A | Coupling Plate Screws (3 req.) | 101 050S |
| 110 | Shifter Assembly | 110 015KG |
| 110A | Handle Locking Plate | 110A015KG |
| 110B | Shift Housing | 110B015KG |
| 112 | Eccentric Lever Knob | 112 070 |
| 112A | Knob Sleeve | 112A070 |
| 112B | Eccentric Knob Screw | 112B070 |
| 112C | Plug | 112C070 |
| 117AN | Drive Plate w/ Drag Washer | 117AN070 |
| 117DN | Drive Plate w/ Drag Washer | 117DN070 |
| 119 | Coupling Plate | 119 015KG |
| 124A | Bridge Cover Assembly | 124L050VS |
| 134 | Gear Stud | 134 050VS |
| 141 | Cam Follower | 141 050VS |
| 143 | Preset Screw | 143 050VS |
| 149 | Rod Clamp Nut (2 req.) | 149 070 |
| 156 | Drag Cover | 156 050VS |
| 156A | Lock Pin | 156A030VS |
| 156B | Lock Plate | 156B030VS |
| 157 | Quadrant Spacing Bushing (2 | 157S012LT |
| 161 | Locating Pin Assembly (2 req.) | 161C070 |
| 171 | Shift Plunger | 171 015KG |
| 172 | Shift Button (Low) | 172 015KG |
| 172A | Spring Spacer | 172A050VS |
| 172B | Shift Button (High) | 172B015KG |
| 173 | Spool Bushing | 173 050VS |
| 183 | Tube Frame | 183 050VSW |
| 264 | Stand Gasket | 264 30T |