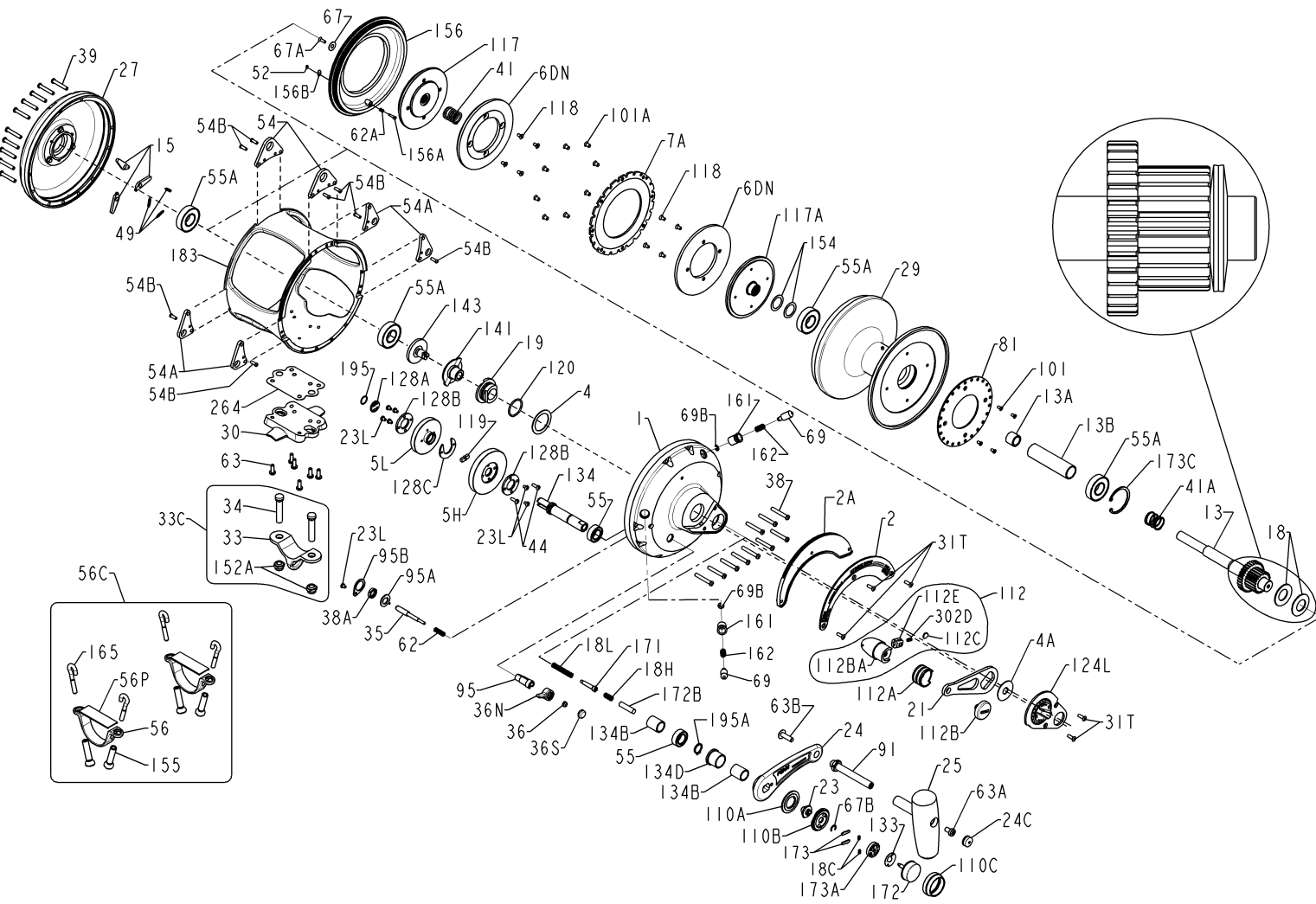




PARTS LIST FOR MODEL 130VSX



KEY NO.	DESCRIPTION	PART NO.
55	Ball Bearing (2 req)	055 080ST
55A	Ball Bearing (4 req)	055 130
56	Rod Brace (2 req)	056 130
56C	Rod Brace Kit	056C130VSX
56P	Rod Brace Pad (2 req)	056P117
62	Click Spring	062 050
62A	Drag Cover Lock Spring	062 545
63	Stand Screw (6 req)	063 030T
63A	Handle Knob Screw	063A050
63B	Handle Shaft Screw	063 080VS
67	Pinion Retaining Washer	067 070
67A	Pinion Retaining Screw	067A070
67B	Retaining Ring	067 130VS
69	Drag Locating Pin (2 req)	069 130
69B	Retaining Ring (2 req)	069B130
81	Click Ratchet Plate	081 130
91	Handle Shaft	091 080VS
95	Click Bushing	095 070
95A	Click Bushing Lock Washer	095A050
95B	Click Locking Plate	095B070
101	Click Ratchet Screw (4 req)	101 030
101A	Drag Washer Screw (8 req)	101 130S
110A	Handle Screw Locking Ring	110A130VS
110B	Shifter Base Assembly	110B130VS
110C	Shift Button Retainer	110C130VS
112	Lever Knob Assembly	112 130VS
112A	Sleeve	112A130VS
112B	Screw	112B130VS
112BA	Lever Knob	112 130VS-1
112C	Click Plate	112C030VS
112E	Click Plate Housing	112E030VS
117	Outer Drive Plate	117 130
117A	Inner Drive Plate	117A130
118	Drive Plate Screw (8 req)	118 080S
119	Shift Plate	119 130VS
120	O-Ring	120 130VS
124L	Bridge Cover Assembly	124L130VS
128A	Drive Plate	128A130VS
128B	Drive Plate (2 req)	128B130VS
128C	Main Gear Connecting Plate	128C130VS
133	Retaining Clip	133 030VS
134	Gear Stud	134 130VS
134B	Shifter Sleeve (2 req)	134B130VS
134D	Shifter Bushing	134D130VS
141	Cam Follower	141 130VS
143	Adjusting Screw	143 130VS
152A	Rod Clamp Nut (2 req)	152A080T
154	Spool Shim (2 req)	154 130
155	Turnbuckle (2 req)	155 130
156	Drag Cover	156 130VS
156A	Drag Cover Lock Pin	156A030VS
156B	Drag Cover Lock Plate	156B030VS
161	Locating Pin Bushing (2 req)	161 130VS
162	Locating Pin Spring (2 req)	162 130
165	RH Screw Hook (4 req)	165 116
171	Shifter Plunger	171 015KG
172	Shifter Button	172 130VS
172B	Shifter Spacer	172B130VS
173	Shifter Catch (2 req)	173 030VS
173A	Shifter Catch Holder	173A130VS
173B	Retaining Ring	173 130VS
183	Tube Frame	183 130VSX
195	Spiral Retaining Ring	195 024KG
195A	Retaining Ring	195 600
264	Stand Gasket	264 130ST
302D	Spring	302D525MAG

KEY NO.	DESCRIPTION	PART NO.
1	Right Side Plate	001 130VS
2	Quadrant Ring	002 130VS
2A	Drag Lever Ratchet	002A130VS
4	Cam Thrust Washer	004 130VS
4A	Lever Thrust Washer	004A070
5H	High Speed Main Gear	005 130VSHS
5L	Low Speed Main Gear	005 130VSL
6DN	Drag Washer Asm. (2 req)	006DN130
7A	Drag Plate	007A130VS
13	Pinion Gear Assembly	013 130VS
13A	Pinion Sleeve (short)	013B130
13B	Spool Sleeve (long)	013B130VS
15	Dog (3 req.)	015 130
18	Clutch Disc Spring (2 req)	018 130
18C	Shift Catch Spring (2 req)	018C015KG
18H	Shift Spring (Heavy)	018H030VS

KEY NO.	DESCRIPTION	PART NO.
18L	Shift Spring (Light)	018L030VS
19	Drag Cam	019 130VS
21	Drag Lever	021 130VS
23	Handle Screw	023 130VS
23L	Screw (7 req)	023L750
24	Handle Arm	024 130VS
24C	Handle Knob Cap	024C080ST
25	Handle Knob	025 080ST
27	Left Side Plate Assembly	027 130VS
29	Spool	029L130VS
30	Stand	030 130VS
31T	Screw (5 req)	031T070
33	Rod Clamp	033 130ST
33C	Rod Clamp Kit	033C130VSX
34	Rod Clamp Screw (2 req)	034 130

KEY NO.	DESCRIPTION	PART NO.
35	Click Tongue	035 130VS
36	Click Button Nut	036 700
36N	Click Button	036N050
36S	Click Button Cap	036S080ST
38	R. S. Plate Screw (10 req)	038 130VS
38A	Click Retainer Nut	038 710
39	L.S. Plate Screw (10 req)	039 130VS
41	L.S. Bearing Spring	041 130VS
41A	R.S. Bearing Spring	041A130VS
44	Drive Plate Screw (2 req)	044 710
49	Dog Spring (3 req)	049 710
52	Retaining Ring	052 910
54	Harness Lug (2 req)	054 130VS
54A	Rod Brace Lug (4 req)	054A130VS
54B	Lug Screw (8 req)	054B080VS

KEY NO.	DESCRIPTION	PART NO.
55	Ball Bearing (2 req)	055 080ST
55A	Ball Bearing (4 req)	055 130
56	Rod Brace (2 req)	056 130
56C	Rod Brace Kit	056C130VSX
56P	Rod Brace Pad (2 req)	056P117
62	Click Spring	062 050
62A	Drag Cover Lock Spring	062 545
63	Stand Screw (6 req)	063 030T
63A	Handle Knob Screw	063A050
63B	Handle Shaft Screw	063 080VS
67	Pinion Retaining Washer	067 070
67A	Pinion Retaining Screw	067A070
67B	Retaining Ring	067 130VS
69	Drag Locating Pin (2 req)	069 130
69B	Retaining Ring (2 req)	069B130
81	Click Ratchet Plate	081 130
91	Handle Shaft	091 080VS
95	Click Bushing	095 070
95A	Click Bushing Lock Washer	095A050
95B	Click Locking Plate	095B070
101	Click Ratchet Screw (4 req)	101 030
101A	Drag Washer Screw (8 req)	101 130S
110A	Handle Screw Locking Ring	110A130VS
110B	Shifter Base Assembly	110B130VS
110C	Shift Button Retainer	110C130VS
112	Lever Knob Assembly	112 130VS
112A	Sleeve	112A130VS
112B	Screw	112B130VS
112BA	Lever Knob	112 130VS-1
112C	Click Plate	112C030VS
112E	Click Plate Housing	112E030VS
117	Outer Drive Plate	117 130
117A	Inner Drive Plate	117A130
118	Drive Plate Screw (8 req)	118 080S
119	Shift Plate	119 130VS
120	O-Ring	120 130VS
124L	Bridge Cover Assembly	124L130VS
128A	Drive Plate	128A130VS
128B	Drive Plate (2 req)	128B130VS
128C	Main Gear Connecting Plate	128C130VS
133	Retaining Clip	133 030VS
134	Gear Stud	134 130VS
134B	Shifter Sleeve (2 req)	134B130VS
134D	Shifter Bushing	134D130VS
141	Cam Follower	141 130VS
143	Adjusting Screw	143 130VS
152A	Rod Clamp Nut (2 req)	152A080T
154	Spool Shim (2 req)	154 130
155	Turnbuckle (2 req)	155 130
156	Drag Cover	156 130VS
156A	Drag Cover Lock Pin	156A030VS
156B	Drag Cover Lock Plate	156B030VS
161	Locating Pin Bushing (2 req)	161 130VS
162	Locating Pin Spring (2 req)	162 130
165	RH Screw Hook (4 req)	165 116
171	Shifter Plunger	171 015KG
172	Shifter Button	172 130VS
172B	Shifter Spacer	172B130VS
173	Shifter Catch (2 req)	173 030VS
173A	Shifter Catch Holder	173A130VS
173B	Retaining Ring	173 130VS
183	Tube Frame	183 130VSX
195	Spiral Retaining Ring	195 024KG
195A	Retaining Ring	195 600
264	Stand Gasket	264 130ST
302D	Spring	302D525MAG