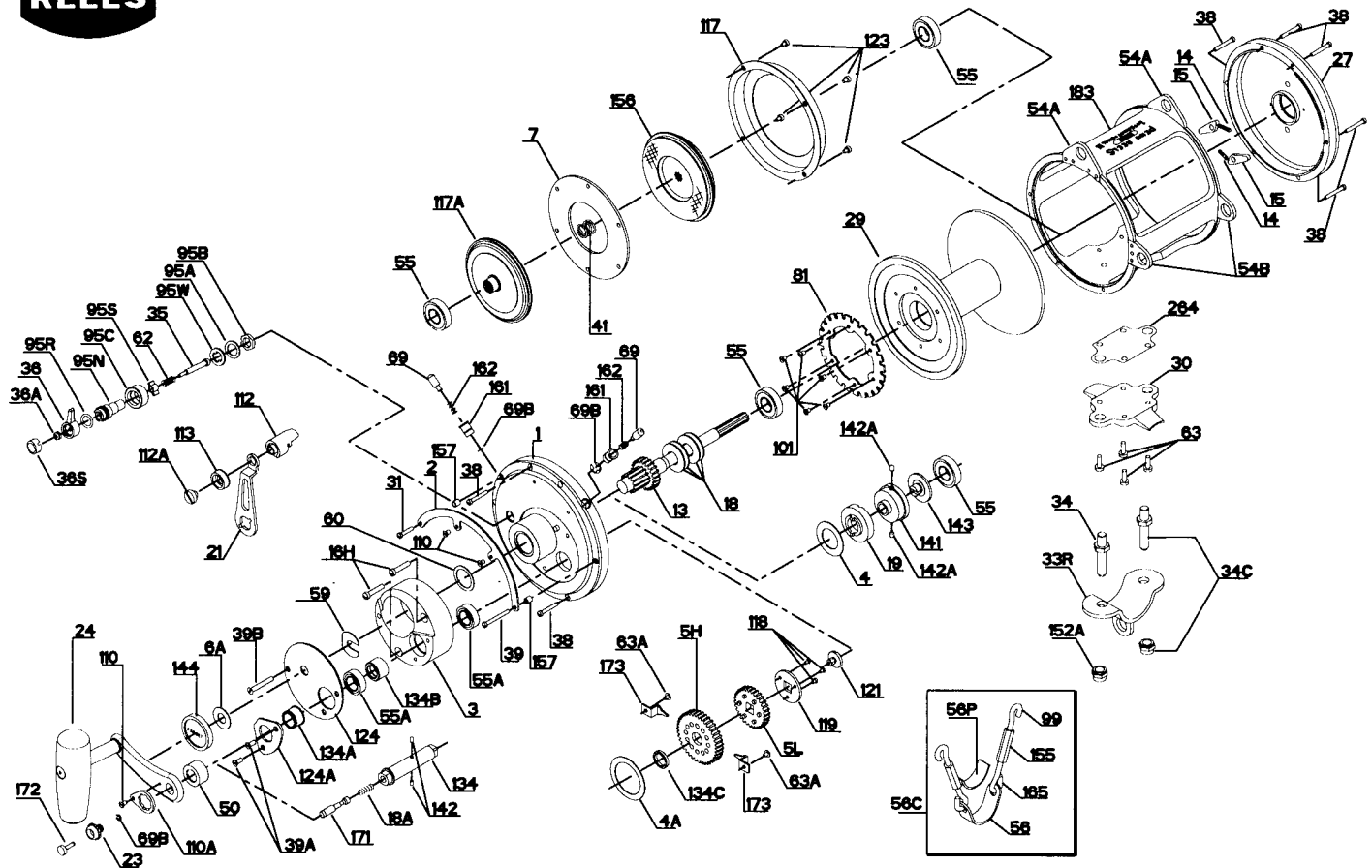




PARTS LIST FOR MODEL 80ST AND 80STW



KEY NO.	DESCRIPTION	PART NO.	KEY NO.	DESCRIPTION	PART NO.
1	R. S. Plate Assembly	1N-80ST	63A	Hold Down Screw (4 req.)	63-349
2	Quadrant Ring	2-80	69	Locating Pin (2 req.)	69-50
3	Bridge	3-80ST	69B	Retaining Ring (3 req.)	69B-50
4	Cam Thrust Washer	4-80	81	Ratchet	81-80S
4A	Gear Thrust Washer	4-130	95A	Click Bushing Washer	95A-20
5H	Main Gear High-Speed	5-80HST	95B	Click Bushing Nut	38-710
5L	Main Gear Low-Speed	5-80LST	95C	Click Adjustment Ring	95C-80ST
6A	Spacer Washer	6-155	95N	Click Tongue Bushing	95N-80ST
7	Metal Drag Washer	7A-80	95R	Click O-Ring	95R-80ST
13	Pinion Gear	13-80ST	95S	Click Spring Slider	95S-80ST
14	Pinion Gear	13-80STW	95W	Eared Spring Washer	95W-80ST
14	Dog Spring (2 req.)	49-710	99	Harness Lug Screw Hook (Upper)	99-115
15	Dog (2 req.)	15-130	101	Ratchet Screw (6 req.)	101-30
16H	Hidden Bridge Screws (2 req.)	16H-130	110	Handle Lock Screw (3 req.)	110-50
18	Disc Clutch Spring (4 req.)	18-80W	110A	Handle Locking Plate	110A-50
18A	Gear Stud Spring	18-349	112	Eccentric Knob	112-50
19	Eccentric Cam	19H-80	112A	Eccentric Knob Screw	112A-50
21	Eccentric Lever	21-80ST	113	Eccentric Lever Cap	113-50
23	Handle Screw	23-80ST	117	Drive Plate (Outer)	117-80ST
24	Handle Complete	24-80ST	117A	Drive Plate (Inner)	117A-80T
27	L.S. Plate Assembly	27-80ST	118	Coupling Plate Screw (3 req.)	101-80ST
29	Spool	29L-80S	119	Coupling Plate	119-80ST
30	Spool	29L-80SW	121	Gear Stud Screw	121-80ST
30	Stand	30-80S	123	Drag Cover Screw (4 req.)	123-50
31	Short Quadrant Screw	31-20	124	Bridge Cover	124-80ST
33R	Rod Clamp	33-130ST	124A	Bearing Cover	124A-80ST
34	Clamp Screw (2 req.)	34-80T	134N	Gear Stud	134N-80ST
34C	Rod Clamp Screw w/Nut	34C-80T	134A	Bushing	134A-80ST
35	Click Tongue	35-80T	134B	Grooved Spacer Bushing	134B-80ST
36	Click Button	36-80ST	134C	Gear Bushing	134C-80ST
36A	Click Button Nut	36-700	141	Cam Follower	141-80
36S	Click Button Cap	35S-80ST	142	Gear Stud Pin (2 req.)	142-50
38	Frame Screw	38-50	142A	Cam Follower Pins (2 req.)	142-80ST
39	Long Quadrant Screw	39-50	143	Adjusting Screw	143-80
39A	Cover Screws (2 req.)	39A-80S	144	Preset Knob	144-50
39B	Cover Screw	39-80ST	152A	Rod Clamp Acorn Nut	152A-80T
41	L.S. Bearing Spring	41-50	155	Turnbuckle (2 req.)	155-116
50	Shield	50-80ST	156	Drag Cover	156-80S
54A	Top Harness Lug (2 req.)	54A-80S	157	Quadrant Spacer Bushing (2 req.)	157-50
54B	Harness Lug (2 req.)	54B-80S	161	Locating Pin Bushing (2 req.)	161-50
55	Ball Bearing (4 req.)	55-80	162	Locating Pin Spring (2 req.)	162-50
55A	Ball Bearing (2 req.)	55-80ST	165	Harness Lug Screw Hook (Lower) (2 req.)	165-116
56	Rod Brace	56-116	171	Plunger	171-80ST
56C	Rod Brace Assembly (Complete)	56C-116	172	Plunger Cap	172N-80S
59	Slotted Washer	59-50	173	Gear Retainer	173-50S
60	Backing Washer	60-50	183	Tube Frame	183-80ST
62	Click Spring	62-50		Tube Frame	183-80STW
63	Stand Screw (4 req.)	63-30T	264	Stand Gasket	264-80T