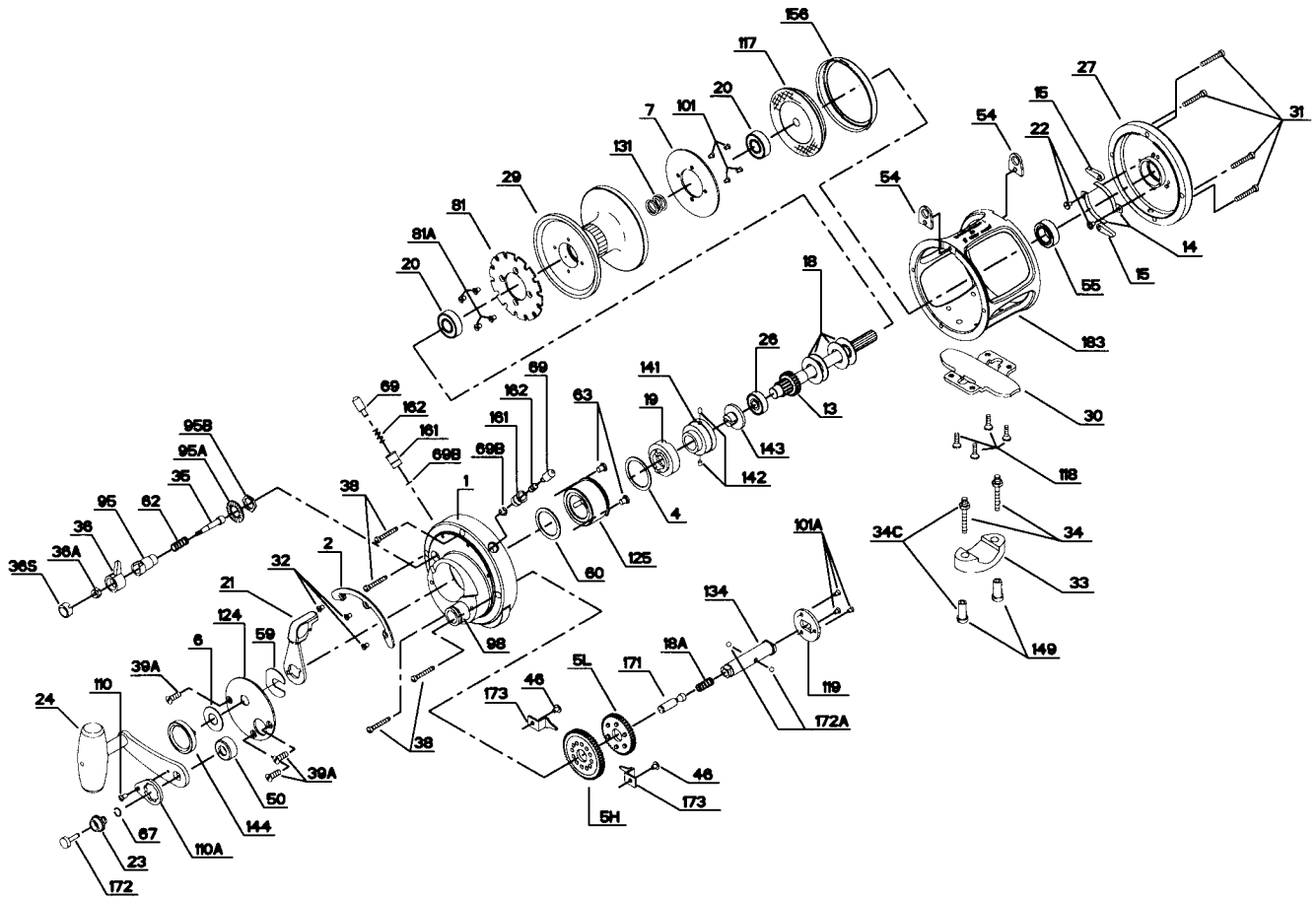




PARTS LIST FOR MODEL 16S



KEY NO.	DESCRIPTION	PART NO.	KEY NO.	DESCRIPTION	PART NO.
1	R.S. Plate Assembly	1-16S	59	Slotted Washer	59-50
2	Quadrant Ring	2-16S	60	Backing Washer	60-50
4	Cam Thrust Washer	4-30	62	Click Spring	18-60
5H	Main Gear High Speed	5-16HS	63	Hold Down Screw (2 req.)	63-349
5L	Main Gear Low Speed	5-16LS	67	Plunger Cap Retaining Ring	67-16S
6	Spacer Washer	6-15S	69	Locating Pin (2 req.)	69-50
7	Metal Drag Washer	7-16S	69B	Retaining Ring (2 req.)	69B-50
13	Pinion Gear	13-16S	81	Ratchet	81-16S
14	Dog Spring (2 req.)	14-16S	81A	Ratchet Screw (4 req.)	101-30
15	Dog (2 req.)	15-50	95	Click Tongue Bushing	95-80
18	Disc Clutch Spring (4 req.)	18-20	95A	Click Bushing Washer	95A-20
18A	Gear Stud Spring	18-349	95B	Click Bushing Nut	38-710
19	Eccentric Cam	19-16S	98	Bridge Bushing	98-16S
20	Spool Ball Bearing (2 req.)	20-704	101	Drag Washer Screw (4 req.)	101-30
21	Eccentric Lever	21-16S	101A	Coupling Plate Screw (3 req.)	101-50S
22	Dog Spring Screw (2 req.)	22-109	110	Handle Lock Screw	110-50
23	Handle Screw	23-16S	110A	Handle Locking Plate	110A-16S
24	Handle Complete	24-16S	117	Drive Plate w/ Drag Washer	117-16S
26	Ball Bearing	26-40	118	Stand Screw (4 req.)	118-80
27	L.S. Plate	27-16S	119	Coupling Plate	119-30S
29	Spool	29L-16S	124	Bridge Cover	124-16S
30	Stand	30-12LT	125	Cam Housing	125-30S
31	L.S. Plate Screw (4 req.)	31-80	131	L.S. Bearing Spring	131-6
32	Quadrant Screw (3 req.)	110-50	134	Gear Stud	134-16S
33	Rod Clamp	33-113	141	Cam Follower	141-16S
34	Clamp Screw (2 req.)	34-114HLW	142	Cam Follower Pin (2 req.)	142-50
34C	Rod Clamp Screw w/Nut	34C-114HLW	143	Adjusting Screw	143-30
35	Click Tongue	35-80T	144	Preset Knob	144-16S
36	Click Button	36-50	149	Rod Clamp Nut (2 req.)	149-45
36A	Click Button Nut	36-700	156	Drag Cover	156-16S
36S	Click Button Cap	36S-80ST	161	Locating Pin Bushing (2 req.)	161-50
38	R.S. Plate Screw (4 req.)	38-50	162	Locating Pin Spring (2 req.)	162-50
39A	Bridge Cover Screw (3 req.)	39A-80S	171	Plunger	171-16S
46	Cam Housing Screw (2 req.)	46A-704	172	Plunger Cap	172-16S
50	Gear Stud Shield	50-16S	172A	Shifting Ball (2 req.)	172A-16S
54	Harness Lug (2 req.)	54-16S	173	Gear Retainer (2 req.)	173-50S
55	Ball Bearing	55-80ST	183	Tube Frame	183-16S