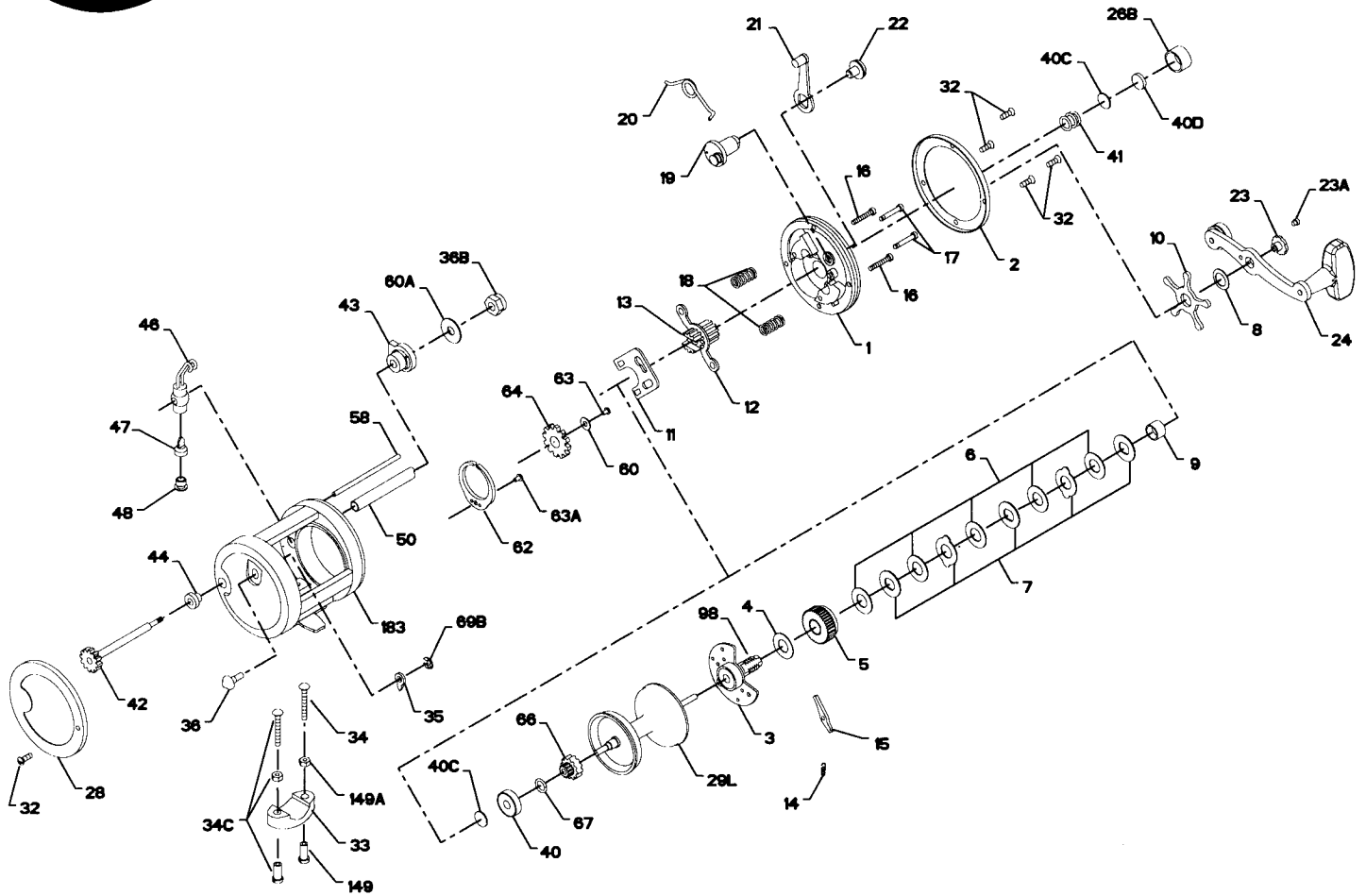




PARTS LIST FOR MODEL 320GTI



KEY NO.	DESCRIPTION
1	Right Side Plate
2	Right Side Ring
3	Bridge assembly
4	Fiber Washer
5	Main Gear
6	Friction Drag Washer (5 req.)
7	Metal Drag Washer (Set of 5)
8	Tension Spring
9	Spacing Sleeve
10	Star Drag
11	Eccentric Jack
12	Pinion Yoke
13	Pinion Gear
14	Dog Spring
15	Dog
16	Lower Bridge Screw (2 req.)
17	Upper Bridge Screw (2 req.)
18	Clutch Spring (2 req.)
19	Eccentric Cam
20	Eccentric Spring
21	Eccentric Lever Assembly
22	Eccentric Screw
23	Handle Assembly Screw
23A	Handle Lock Screw
24	Handle Assembly
26B	Spool Tension Control Cap
28	Left Side Ring
29L	Aluminum Spool
32	Side Plate Screw (5 req.)
33	Rod Clamp
	Ringed Rod Clamp (Optional)

PART NO.
1-320
2-320
3-320
4-349
5-320
6-320
7C-970
8-349
9-320
10-349
11-320
12-155
13-320
14-330
15-320
16-113H
17-113H
18-60
19-320
20-155
21-285
22-60
23-114
110-60
24-320
26B-320
28-320
29L-320
32-17
33-113
*33R-200

KEY NO.	DESCRIPTION	PART NO.
34	Clamp Screw Only	34-45
34C	Clamp Screw w/Nuts	34C-45
35	Click Tongue	35-320
36	Click Button	36-320
36B	Worm Shaft Nut	36-700
40	Ball Bearing	40-320
40C	Metal Thrust Washer (2 req.)	40C-320
40D	Rubber Thrust Washer	40D-320
41	Right Side Thrust Spring	41-330
42	Worm	42-320N
43	Right Side Worm Bearing	43-320
44	Left Side Worm Bearing	44-320
46	Line Guide Carriage	46-320N
47	Pawl	47-320
48	Pawl Cover Screw	48-330N
50	Worm Shield	50-320
58	Line Guide Post	58-320
60	Idler Gear Washer	60-320
60A	Idler Gear Washer	60-320
62	Click Spring	62M-209
63	Idler Gear Screw (2 req.)	63-500S
63A	Click Spring Screw	63-330
64	Idler Gear	64-320
66	Spool Gear Click Ratchet	66-320
67	Spool Gear Lock Ring	69-9
69B	Retaining Ring (Click Button)	69B-600
98	Gear Sleeve	98-320
149A	Clamp Nut Only	149-45
149	Hex Nut Only	149-200
183	Frame	183-320

\*Not Shown