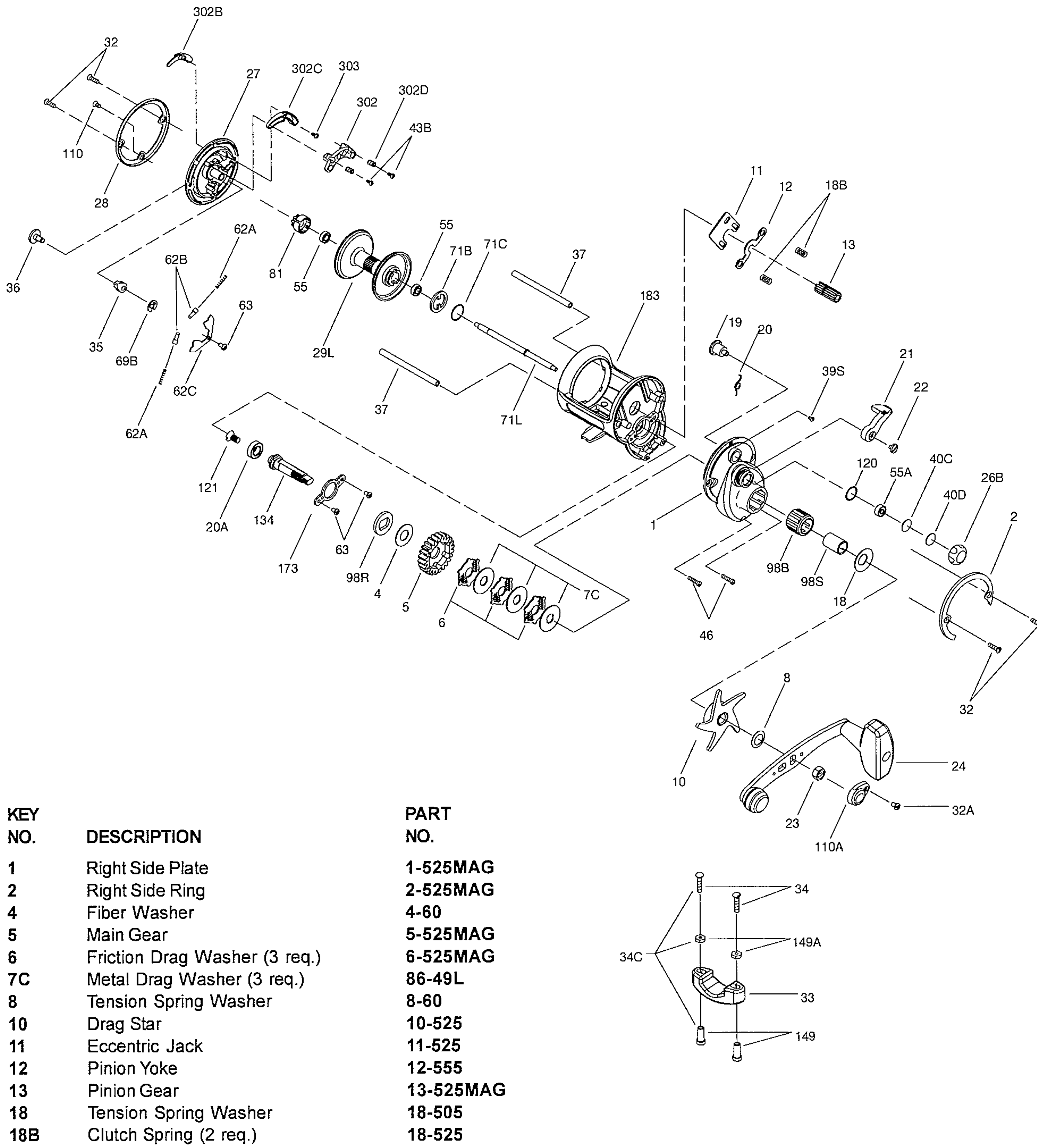




PARTS LIST FOR 525MAG



KEY NO.	DESCRIPTION	PART NO.
1	Right Side Plate	1-525MAG
2	Right Side Ring	2-525MAG
4	Fiber Washer	4-60
5	Main Gear	5-525MAG
6	Friction Drag Washer (3 req.)	6-525MAG
7C	Metal Drag Washer (3 req.)	86-49L
8	Tension Spring Washer	8-60
10	Drag Star	10-525
11	Eccentric Jack	11-525
12	Pinion Yoke	12-555
13	Pinion Gear	13-525MAG
18	Tension Spring Washer	18-505
18B	Clutch Spring (2 req.)	18-525

KEY NO.	DESCRIPTION	PART NO.
19	Eccentric	19-525
20	Eccentric Spring	20-155
20A	Ball Bearing	20-722
21	Eccentric Lever	21-525
22	Eccentric Screw	22-310
23	Handle Nut	23-555
24	Handle	24-525
26B	Spool Tension Control Cap	26B-555
27	Left Side Plate	27-525MAG
28	Left Side Ring	28-525MAG
29L	Aluminum Spool	29L-525MAG
32	Frame Post Screw (4 req.)	32-310
32A	Handle Lock Screw	32-15
33	Rod Clamp	33-525
34	Rod Clamp Screw (2 req.)	34-45
34C	Rod Clamp Screws w/Nuts	34C-45
35	Click Tongue	35-525MAG
36	Click Button	36-525
37	Frame Post (2 req.)	37-525
39S	Right Side Plate Screw	39S-965
40C	Metal Thrust Washer	40C-555
40D	Rubber Thrust Washer	40D-555
43B	Magnet Housing Screw (2 req.)	43B-965
46	Side Plate Screw (2 req.)	46-4300
55	R.S. Spool Ball Bearing (2 req.)	55-965
55A	Ball Bearing	55-113H
62A	Click Spring (2 req.)	14-40
62B	Click Pin (2 req.)	62B-525MAG
62C	Click Spring Cover	62C-525
63	Retainer Screw (3 req.)	63-500S
69B	Retaining Ring	69B-600
71B	Clutch Plate	71B-525MAG
71C	Clutch Plate Retainer	71C-525MAG
71L	Spool Spindle	71L-525MAG
81	Click Ratchet	81-525MAG
98B	Anti-Reverse Bearing	98B-525
98R	Ratchet Spacer	98-525
98S	Clutch Shaft	98S-525
110	Side Plate Short Screw	110-50
110A	Handle Nut Lock Cap	110A-555
120	O-Ring	120-113H
121	Bearing Screw	121-525
134	Gear Stud	134-525
149	Rod Clamp Nut (2 req.)	149-45
149A	Rod Clamp Hex Nut (2 req.)	149-200
173	Bearing Retainer	173-525
183	Frame	183-525MAG
302	Magnet Housing	302-525MAG
302B	Magnet Control Button	302B-525MAG
302C	Magnet Ramp	302C-525MAG
302D	Magnet Spring (2 req.)	302D-525MAG
303	Magnet Button Screw	303-525MAG